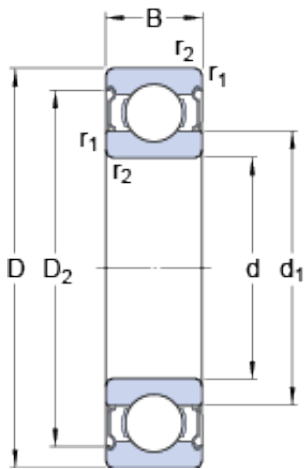




# BEARING DRIVESHAFT, INC.



4 mm x 16 mm x 5 mm 6219-J20AA-C3  
Insulation Bearing 95x170x32mm

Bearing No. 634-2Z

634-2Z Bearing 2D drawings and 3D CAD models

Size	16x4x5 mm
Bore Diameter	16 mm
Outer Diameter	4 mm
Width	5 mm
d	4 mm
D	16 mm
B	5 mm
d <sub>1</sub>	8.4 mm
D <sub>2</sub>	13.3 mm
r <sub>1,2</sub> - min.	0.3 mm
d <sub>a</sub> - min.	6.4 mm
d <sub>a</sub> - max.	8.3 mm
D <sub>a</sub> - max.	13.6 mm
r <sub>a</sub> - max.	0.3 mm
Basic dynamic load rating - C	1.1 kN
Basic static load rating - C <sub>0</sub>	0.38 kN
Fatigue load limit - P <sub>u</sub>	0.016 kN
Reference speed	95000 r/min
Limiting speed	48000 r/min
Calculation factor - k <sub>r</sub>	0.03
Calculation factor - f <sub>0</sub>	8.4
Size	16x4x5 mm
Bore Diameter	16 mm
Outer Diameter	4 mm



## BEARING DRIVESHAFT,INC.

Width	5 mm
d	4 mm
D	16 mm
B	5 mm
d <sub>1</sub>	8.4 mm
D <sub>2</sub>	13.3 mm
r <sub>1,2</sub> - min.	0.3 mm
d <sub>a</sub> - min.	6.4 mm
d <sub>a</sub> - max.	8.3 mm
D <sub>a</sub> - max.	13.6 mm
r <sub>a</sub> - max.	0.3 mm
Basic dynamic load rating - C	1.1 kN
Basic static load rating - C <sub>0</sub>	0.38 kN
Fatigue load limit - P <sub>u</sub>	0.016 kN
Reference speed	95000 r/min
Limiting speed	48000 r/min
Calculation factor - k <sub>r</sub>	0.03
Calculation factor - f <sub>0</sub>	8.4
Category	Single Row Ball Bearings
Inventory	0.0
Manufacturer Name	SKF
Minimum Buy Quantity	N/A
Weight / Kilogram	0.007
EAN	7316577069757
Product Group	B00308
Enclosure	2 Metal Shields
Precision Class	ABEC 1   ISO P0
Maximum Capacity / Filling Slot	No
Rolling Element	Ball Bearing
Snap Ring	No



## BEARING DRIVESHAFT,INC.

Internal Special Features	No
Cage Material	Steel
Internal Clearance	C0-Medium
Inch - Metric	Metric
Long Description	4MM Bore; 16MM Outside Diameter; 5MM Outer Race Diameter; 2 Metal Shields; Ball Bearing; ABEC 1   ISO P0; No Filling Slot; No Snap Ring; No Internal Special Features
Category	Single Row Ball Bearing
UNSPSC	31171504
Harmonized Tariff Code	8482.10.50.68
Noun	Bearing
Keyword String	Ball
Manufacturer URL	<a href="http://www.skf.com">http://www.skf.com</a>
Manufacturer Item Number	634-2Z
Weight / LBS	0.02
Outer Race Width	0.197 Inch   5 Millimeter
Outside Diameter	0.63 Inch   16 Millimeter
Bore	0.157 Inch   4 Millimeter
bore diameter:	4 mm
static load capacity:	0.38 kN
outside diameter:	16 mm
precision rating:	Not Rated
overall width:	5 mm
finish/coating:	Uncoated
bore type:	Round
cage material:	Steel
closure type:	Double Shielded
outer ring width:	5 mm
row type & fill slot:	Single Row Non-Fill Slot
fillet radius:	0.3 mm



## BEARING DRIVESHAFT, INC.

snap ring included:	Without Snap Ring
maximum rpm:	48000 RPM
internal clearance:	C0
series:	63
dynamic load capacity:	1.11 kN
$d_1$	8.4 mm
$D_2$	13.3 mm
$r_{1,2}$ min.	0.3 mm
$d_a$ min.	6.4 mm
$d_a$ max.	8.3 mm
$D_a$ max.	13.6 mm
$r_a$ max.	0.3 mm
Basic dynamic load rating C	1.11 kN
Basic static load rating $C_0$	0.38 kN
Fatigue load limit $P_u$	0.016 kN
Calculation factor $k_r$	0.03
Calculation factor $f_0$	8.4
Mass bearing	0.0054 kg